

Modernization Update: Product Demonstration

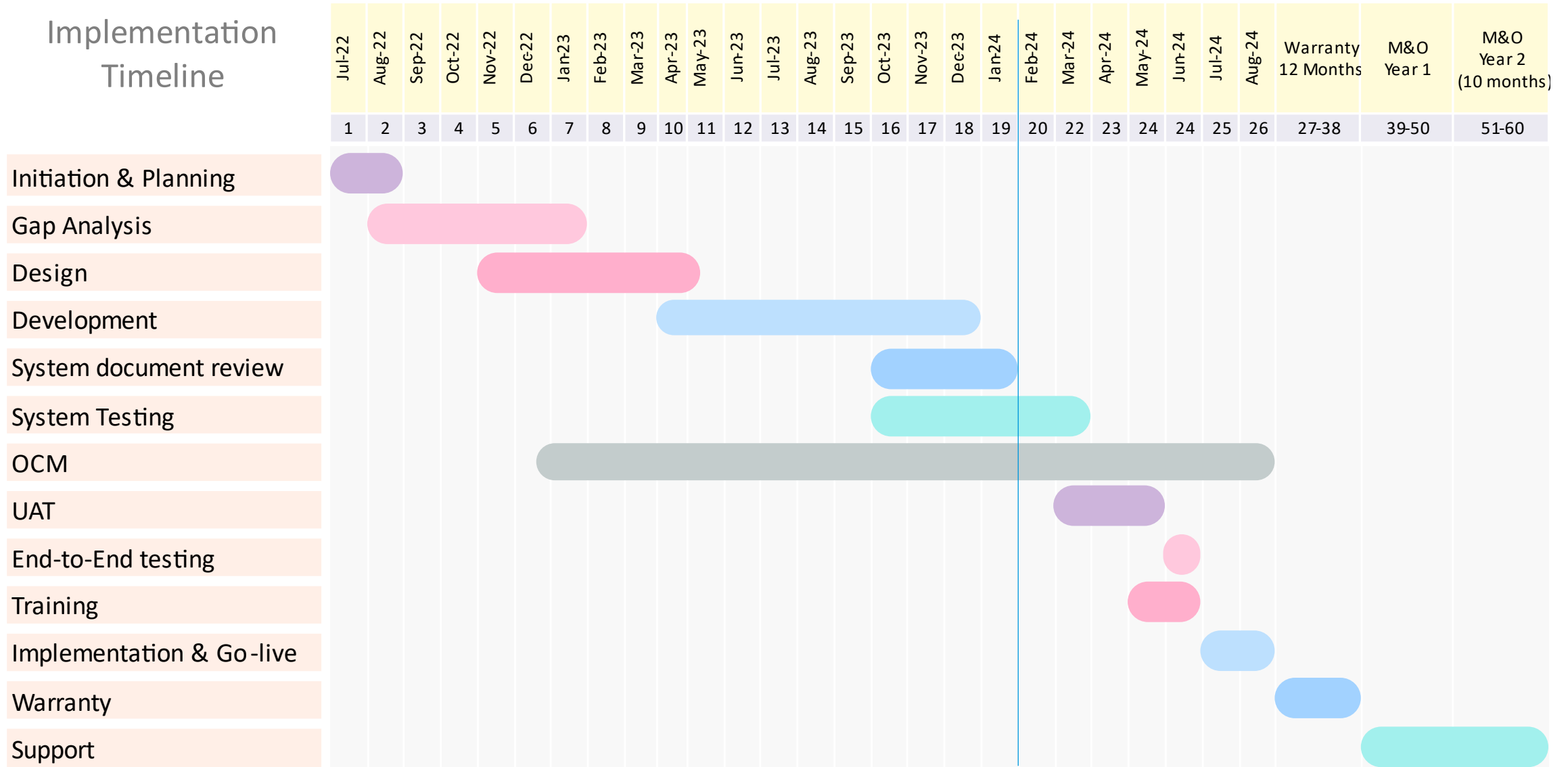
Amber Shultz, Secretary

January 29, 2024



Program Timeline

Implementation Timeline



Status of Modernization

- As of January 19th, 2024, the agency has spent: \$14,965,856.95
- Developing and deploying both a new Tax and Benefits system simultaneously.
- Completed application design and data migration mapping.

Employer Registration

- Entry into the new system depends on an employer's status:
 - New employers will create a new account.
 - Existing employers will be receiving an email from KDOL prior with specific instructions.
 - Employers using TPAs (third party administrators) will be migrated directly. For example, ADP and Paycom won't notice the switch except the new look.

Click the link below to view the Demo

<https://youtu.be/5ENY9TlqqR8>

Quarterly Wage Reporting

Click the link below to view the Demo

<https://youtu.be/oiwwCVSfoCo>

- What's New:
 - More content per page
 - Quick Lanes
 - Easy report download or printing.
 - Confirmation number receipt upon payment of taxes.

Employer Resources

- Assistance will remain at <https://www.dol.ks.gov/employers>
- Requirements and resources for all employers found in the New Employer Toolkit.
- Employer help line: (785) 296 5027
- KDOL.UITax@ks.gov
- Team will transition additional Tax personnel to the help line at go live.

New Employer Toolkit

Requirements and Resources for Kansas Employers



Kansas Department of Labor

UI Tax / Employer Division
401 SW Topeka Blvd.
Topeka, KS 66603-3182



Creating a Claimant Account

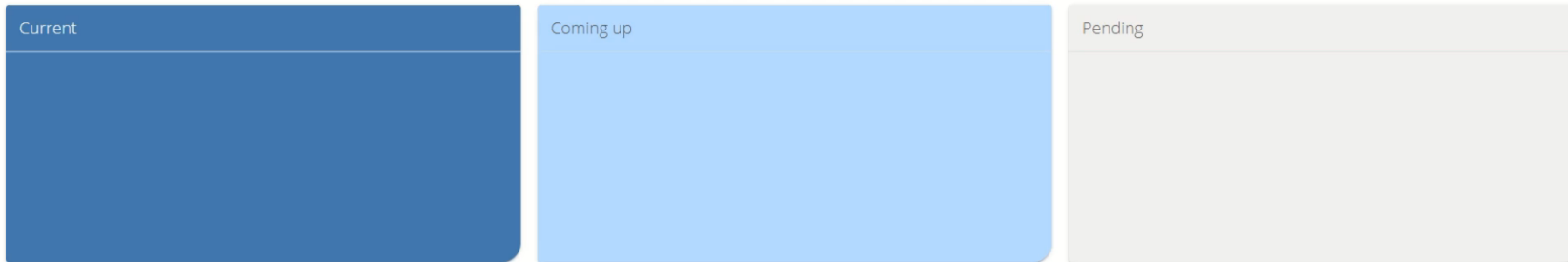
The screenshot displays the Kansas Department of Labor website's user interface. At the top, the Kansas logo is on the left and a search icon is on the right. Below the header, the text "Welcome to the Kansas Department of Labor" is centered. The main content area is divided into two columns. The left column, titled "New user?", contains a blue button labeled "Create an online account" with a person icon. Below this is a horizontal line with "OR" in the center. Underneath is a "User ID" input field with a red border and a cursor, containing the number "14". A note below the field states "User ID should have minimum 5 characters." Below the User ID field is a "Password (Case Sensitive)" input field with a visibility icon. At the bottom of this column is a "Login" button and two links: "Forgot user ID?" and "Forgot Password?". The right column features a chatbot icon labeled "Let's Chat" and the text "Chat with Maggi, your unemployment virtual assistant." Below this is a "Chat with Maggi" button. Further down, there is a section titled "Think someone's filed as you?" with a "Report ID Theft" button.

- Self-service is primary focus of functionality

Filing a Weekly Certification (Claim)

Kansas Home Weekly History Diana Gell

Your unemployment snapshot



- What's New:
 - Comprehensive work search PRIOR to filing a weekly certification

Connect With Us

- ▶ **Website:** dol.ks.gov
- ▶ **Twitter:** [@KansasDOL](https://twitter.com/KansasDOL)
- ▶ **Facebook:** facebook.com/KansasDOL
- ▶ **LinkedIn:** linkedin.com/company/KDOL
- ▶ **Instagram:** [ks_dol](https://instagram.com/ks_dol)

